

# An introduction to the Curriculum for funded non-maintained nursery settings – part of Curriculum for Wales

This curriculum has been developed for funded non-maintained nursery settings to adopt, should they wish to do so. Settings which choose to adopt this curriculum should use it in its entirety to support effective planning to ensure the provision of a developmentally appropriate curriculum for our youngest learners.

## It is, primarily, for use by the following:

- leaders, practitioners and management committees of non-maintained nursery settings that are funded to deliver early education in Wales
- leaders, practitioners and management committees of non-maintained nursery settings which are not funded to deliver early education but which are required, under the National Minimum Standards for Regulated Childcare, to deliver practice in line with the statutory curriculum requirements

**In fulfilling the Welsh Government's statutory duty, this curriculum meets the following requirements:**

## The Four Purposes

**Ultimately, the aim of this curriculum is to support children to become:**

- ambitious, capable learners, ready to learn throughout their lives
- enterprising, creative contributors, ready to play a full part in life and work
- ethical, informed citizens of Wales and the world
- healthy, confident individuals, ready to lead fulfilling lives as valued members of society

**It is particularly important for us to ensure that the learning environment within our setting provides consistent opportunities for the following:**

- play and play-based learning
- being outdoors
- authentic and purposeful learning
- physical literacy



## What's new?

### ■ Enabling adults

We should –

- make strong connections with the child's home and community
- model a joyful approach to learning
- encourage and support children's natural curiosity

### ■ Engaging experiences

They should –

- be hands-on, purposeful and meaningful to the child
- encourage children's independence, and offer risk challenge and opportunities to experience success
- be rooted in real-life, authentic contexts

### ■ Effective environments

They should –

- be indoors and outdoors and should be central to children's authentic experiences
- offer opportunity to explore the environment – both indoors and outdoors
- allow children to express themselves physically, creatively and imaginatively

# The needs of the child: The five developmental pathways

Central to this curriculum are five key developmental pathways that are fundamental to the learning and development of all young children. These developmental pathways are child-centred and are interdependent, having equal value in supporting overall development and progress. The five developmental pathways should be used holistically when planning learning experiences to ensure authentic and purposeful learning takes place.

The five developmental pathways are:

## Belonging

A sense of belonging can bring positive feelings of connection with the home and the setting, and can expand to the community, Wales and the wider world.

## Communication

Communication involves developing listening, attention and understanding, alongside vocabulary and speaking skills.

## Exploration

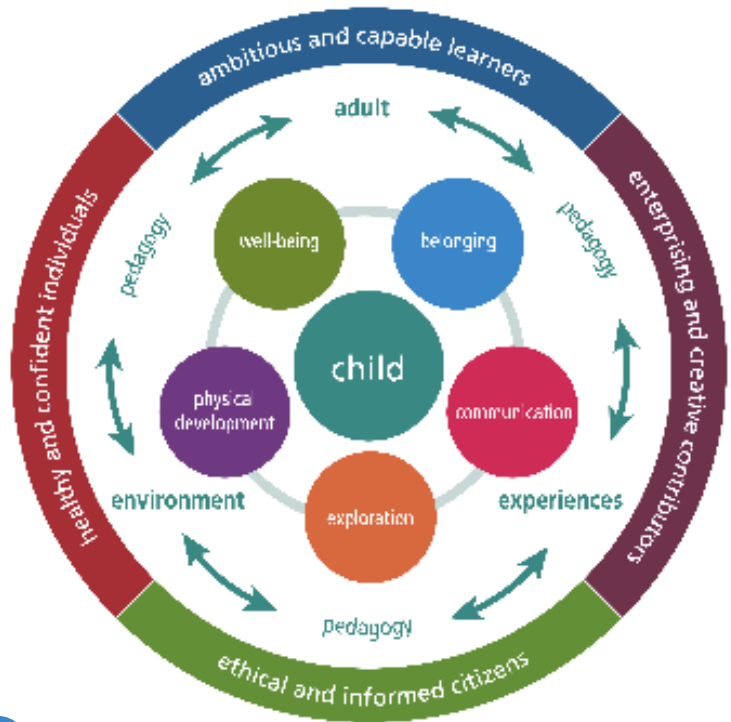
Children are endlessly curious problem solvers who often find delight, awe and wonder in everyday occurrences.

## Physical development

All children have a natural need to move, or be moved, and to move or manipulate objects, often repeatedly, as part of their development.

## Well-being

Children are influenced by the adults, experiences and environments they encounter. When these three work together successfully, they create a strong sense of well-being for all.



## What support is available and what is to come?

### Professional learning for a curriculum for funded non-maintained nursery settings

New modules have been developed to support practitioners as they prepare for the implementation of [A curriculum for funded non-maintained nursery settings](#).

This suite of modules complements the previously published [modules](#) on Hwb and has been developed specifically for practitioners in funded non-maintained nursery settings.

All modules are now available on [Hwb](#) and will help you develop a deeper understanding of the following topics:

- Understanding the Curriculum for Wales and the development of A Curriculum for funded non-maintained nursery settings
- Understanding the five developmental pathways and pedagogy
- Leadership in a non-maintained nursery setting
- Schematic development

The Welsh Government will publish new assessment arrangements that are designed to be used in conjunction with the curriculum by September 2023.